

THE Peachtree PENTHOUSE

UPPER LEVEL



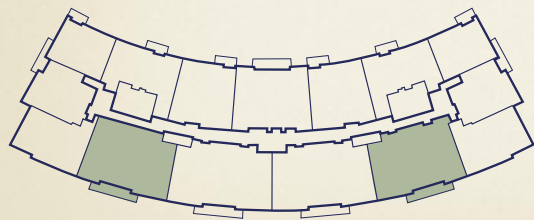
3 BEDROOM PLUS STUDY,
4½ BATHS

Interior sq ft ~ 3,819

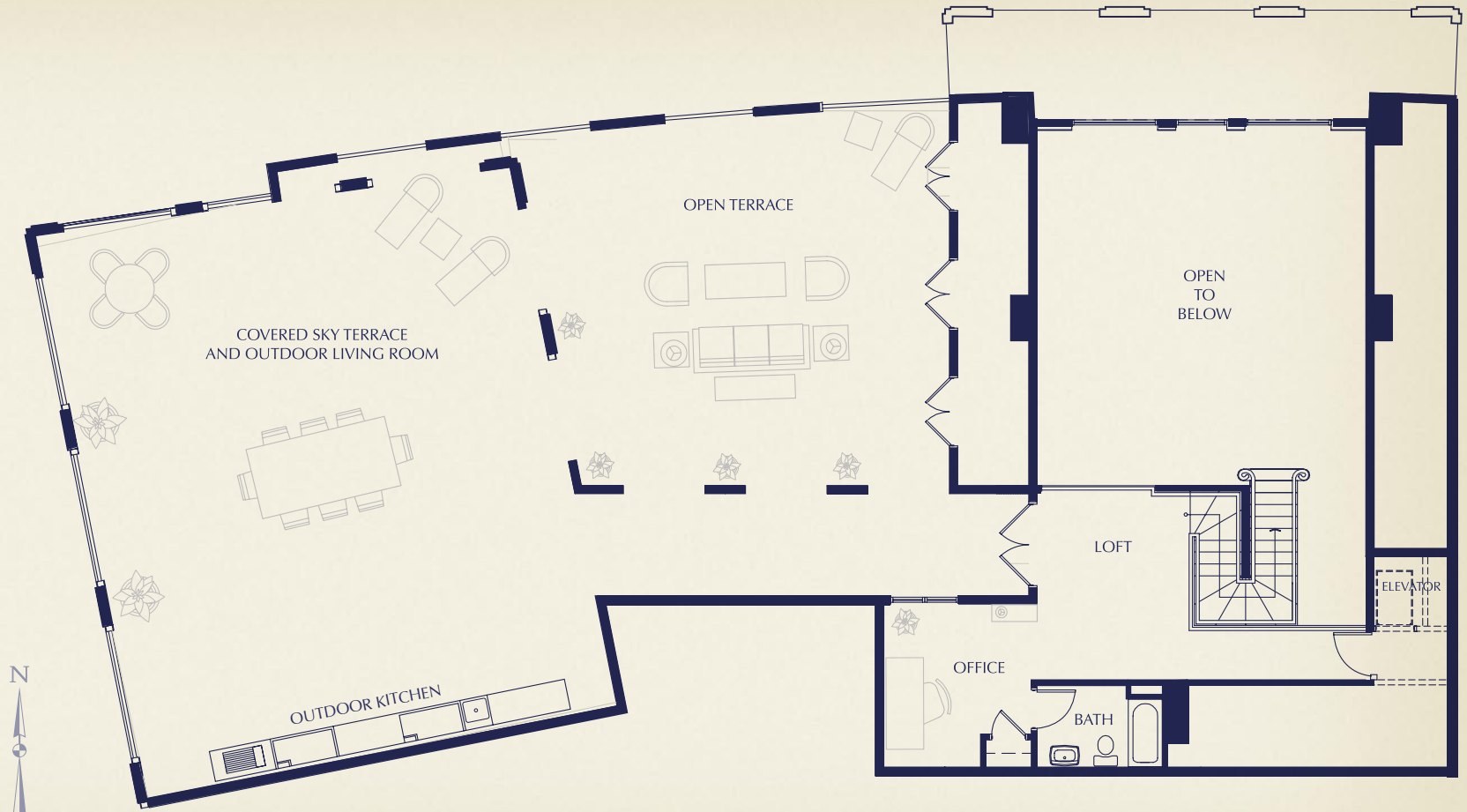
Balcony sq ft ~ 271

Sky Terrace sq ft ~ 2,618

Total sq ft ~ 6,708



FLOORS 10-11



Developer reserves the right to make changes and modifications. All square footages and view orientations are approximate; illustrations may not be to scale. Illustrations are artistic representations of present intention and not future fact.

THE Peachtree PENTHOUSE



LOWER LEVEL

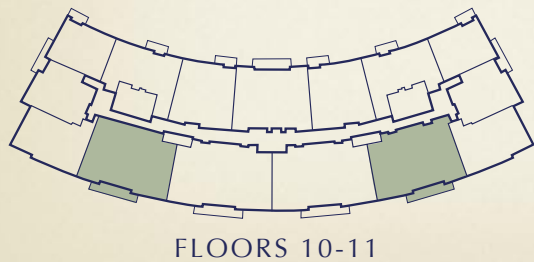
3 BEDROOM PLUS STUDY,
4½ BATHS

Interior sq ft ~ 3,819

Balcony sq ft ~ 271

Sky Terrace sq ft ~ 2,618

Total sq ft ~ 6,708



Developer reserves the right to make changes and modifications. All square footages and view orientations are approximate; illustrations may not be to scale. Illustrations are artistic representations of present intention and not future fact.

PRESENTING *One Vinings Mountain*

LIFE ON THE MOUNTAIN



Your home at One Vinings Mountain is planned to include:

- 24 hour concierge
- Monitored access
- Gated residents' garage
- Full time on-site association management
- Health club
- Spa treatment room
- Aerobics workout room
- A temperature controlled wine cellar and tasting room with city views
- Owner's wood working shop
- Indoor golf area
- Library
- Owner's Club room with wet bar and catering kitchen
- Infinity edge pool overlooking the city
- Owner's pet friendly park
- Garden room opening onto patio and front lawn
- Two private association owned suites for the exclusive use of residents' guest
- Front lawn surrounded by individual private garden retreats
- Outdoor pavilion and fireplace



Developer reserves the right to make changes and modifications. All square footages and view orientations are approximate; illustrations may not be to scale. Illustrations are artistic representations of present intention and not future fact.



770.438.7250

www.oneviningsmountain.com